

Exercise duration: ~10 minutes

Practice exercise

Create 2D Elevation and Section views, Set Them up in Layouts, and Publish both to PDF.

Open the drawing saved from the prior video and use the proper tools to create a 2D Elevation drawing and a 2D Section drawing. In their layout tabs, create the necessary viewports and settings and publish both to PDF format.

1. From the Start page, open the file you created in the previous exercise, named AEC-Exercise1.dwg.
2. Using the Viewport Tools, set the view to Top and the Visual Style to 2D Wireframe. Zoom out about halfway.

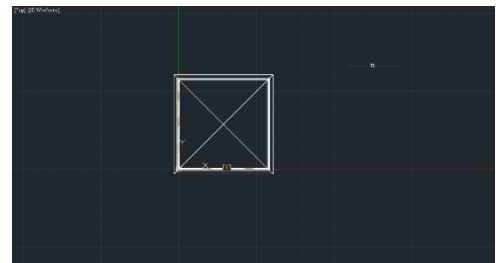


Figure 1. The new view of the AEC-Exercise1 file.

3. Your first task is to create a 2D Elevation view. From the AEC – 3D Architecture tab of the ribbon, click on the Elevation Line icon.
4. Make sure Orthomode is on and draw a vertical line to the left of the left wall. The starting point should be at the top. Say *No to keeping all hidden lines*, then click a point in the upper right corner of the drawing editor to place the 2D Elevation. Adjust your zoom and/or pan if necessary.

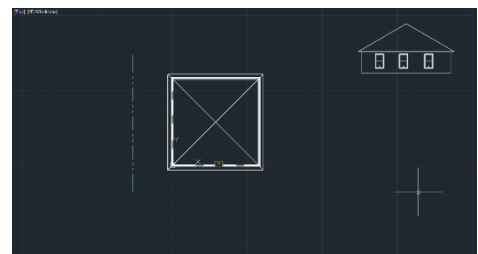


Figure 2. The drawing editor with the 2D Elevation View.

5. Your second task is to create a 2D Section view. Click on the Section Line icon in the ribbon.
6. Draw a horizontal line from right to left that extends through the interior of the drawing. Press Enter to end the line entry prompt. Say *No to keeping all hidden lines*, then click a point in the lower right corner of the drawing editor to place the 2D Section.

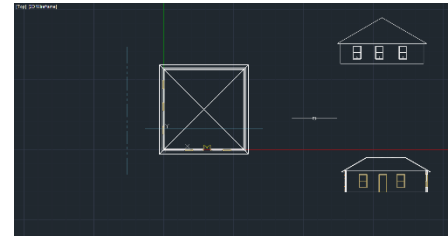


Figure 3. The drawing editor with the 2D Elevation and Section Views.

7. Your third task is to create the Elevation and Section Layouts. Click on the layout tab labeled Elevations.
8. Switch to the Home tab of the ribbon.
9. Using the Layer pulldown, scroll to the bottom and select *G-Anno-Nplt* to set it current. This layer is set not to plot.
10. Click on the Layout tab of the ribbon.
11. Expand the Viewports icon and select *1 Viewport*.
12. Create a large, rectangular viewport that takes up most of the drawing space.
13. Double click within the viewport to activate it.
14. Pan the Model Space view so that the 2D Elevation View is in approximately the middle.
15. Using the Scale menu in the Status Bar, select 1:30
16. Lock the viewport using the tool in the Status Bar.

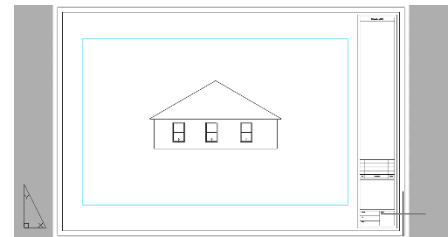


Figure 4. The Elevation layout showing the 2D Elevation View.

17. Your next task is to create the Sections layout.
18. Perform the same actions as you did in the previous task, this time centering the 2D Section View. There is no need to set the layer or expand the Viewports icon.
19. From the Application Menu, expand the Save As icon and select *Save As*. Navigate to the same folder as your 2D files and name this one **AEC-exercise2**.

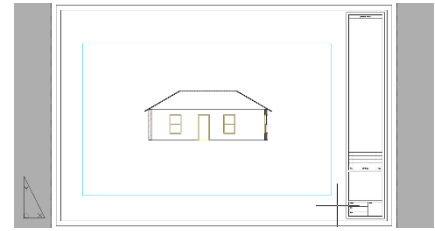


Figure 5. The Elevation layout showing the 2D Section View.

-
20. Your final task is to publish the layouts as PDFs. From the Application Menu, expand the Print icon and select Publish.
 21. Expand the *Publish to:* menu and select *Printer named in page setup*.
 22. Click on the red Model Space entry (top) in the Sheet List and click on the icon above it to remove it (left side, icon with red minus on it).
 23. Click on the ellipsis button in the Publish Options Information (upper right) and specify a folder for the generated PDFs.
 24. Both layouts should have a green check mark next to them, so click the Publish button.
 25. From the QAT, click on the save icon (diskette) and close the file tab.

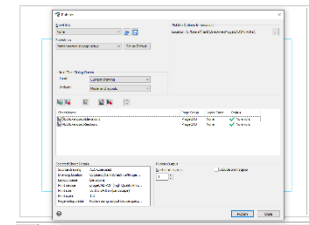


Figure 5. The Publish dialog box.