

Exercise duration: ~10 minutes

Practice exercise

Setting up Model Space and Layout Viewports to Print a PDF.

Open the supplied mechanical assembly drawing. Create three Model Space viewports and change their views. Create four Layout viewports and set up orthographic projection views. Create a PDF of the layout.

1. From the Start page, open the supplied mechanical assembly file named M3-PE1.dwg.

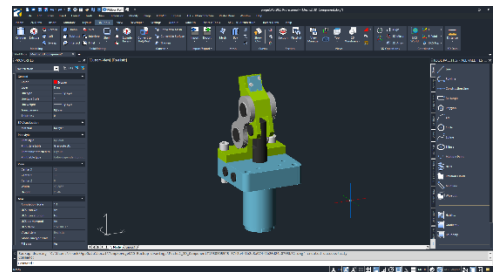


Figure 1. The open M3-PE1.dwg file.

2. Your first task is to set up Model Space into a three viewport configuration. Your workspace should be set to Ribbon Full.
3. Switch to the View tab of the ribbon and expand the Viewport Configuration icon in the Model Viewports tab. Select 3 Viewports.
4. From the Dynamic Input popup menu, select Left to make the largest viewport appear on the left side of the editor.

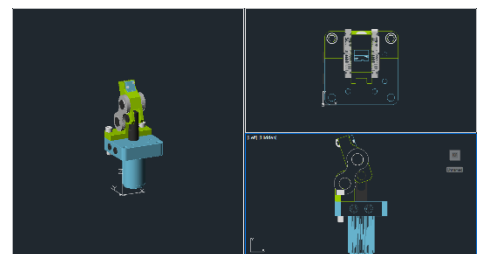


Figure 2. The drawing editor with three Model Space Viewports.

5. Click within the upper right viewport.
From the Viewport Tools menu, set the view to Top. Zoom out slightly.
 6. Click within the bottom right viewport and set its view to Left.
-

7. Your second task is to set up a Layout into a three-view orthographic projection for plotting. Click on the Layout 1 layout tab to display it.
 8. Switch to the Home tab of the ribbon. Click on Layer Manager and make *vports* the current layer.
 9. Switch to the Layout tab of the ribbon and expand the Viewports icon in the Layout Viewports tab. Select 4 Viewports.
 10. Define a viewport area rectangle that generally takes up most of the drawing area.
-

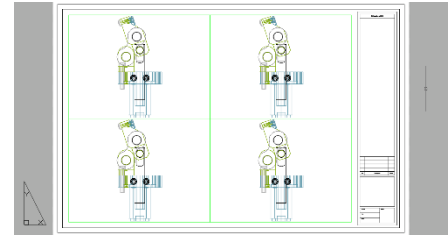


Figure 3. The Layout with four viewports.

11. Your third task is to set the views of the viewports. Double click in the upper left viewport. Using the Viewport Tools, set it to Top view and the Realistic visual style.
12. Activate the bottom left viewport. Set it to Front and Realistic.
13. Activate the bottom right viewport. Set it to Right and Realistic.
14. Erase the top right viewport.
15. Using a Crossing Selection, select the three viewports where they meet in the center of the page. From the Standard Scale pulldown of the Properties palette, select 1:30.

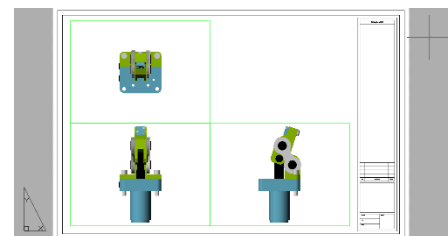


Figure 4. The Layout with orthographic viewports..

16. Lock the three viewports with the Lock tool in the Status Bar.

17. Your next task is to create a PDF of the drawing. Click on the Print icon in the QAT.
18. Expand the Page Setup pulldown menu and select *progeCAD*.
19. Click on the Preview button to make sure your output is correct. Click on Close in the Preview window.
20. Click OK in the Print dialog. Navigate, if necessary, to the folder housing your exercise drawings. Name the PDF **Exercise3-Layout**. Click OK to create the PDF.
21. Press CTRL-S to save the drawing.
22. Close the file tab.

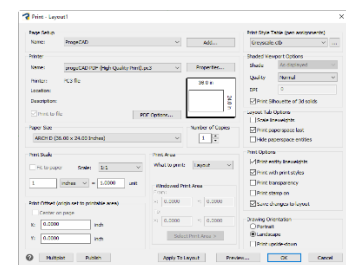


Figure 5. The Print dialog box.