

Exercise duration: ~10 minutes

Practice exercise

Creating a Layer, Annotation, a New Dimension Style, and Linear Dimensions.

Open the drawing that was created in the first third exercise. Create a new layer for annotation. Add Multiline and Single Line text. Make a new Dimension Style, set it current, and add dimensions using both the point-to-point and the entity selection methods.

1. From the Start page, open the file you created, Exercise3.dwg, by clicking on its icon in the middle panel.

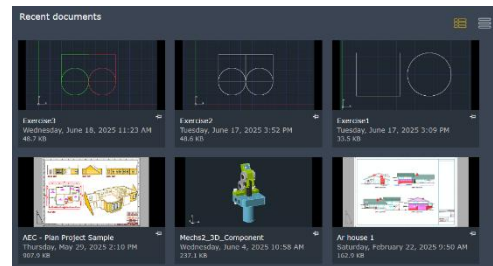


Figure 1. The Recent Documents Thumbnails

2. Your first task is to create a new layer. Click on the Layer Manager icon in the Properties panel of the Home tab of the ribbon. Make a new layer named Anno and set its color to *magenta* (color 6).
3. Set the new layer Anno to be the current layer.
4. Dismiss the layer palette.

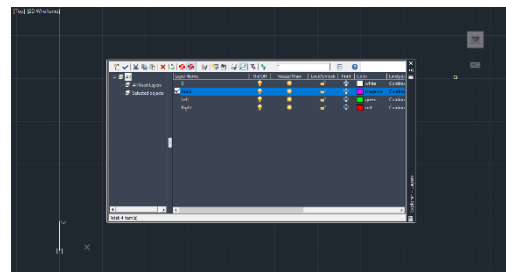


Figure 2. The drawing editor with the Layer Palette open.

5. Your second task is to add Multiline text. Click on the Annotate tab of the ribbon to open it.
6. Click on the Multiline Text icon and create a text box above the green circle and below the top green line.
7. Type in the word *GREEN*. Click outside of the text box to end the command.
8. Select the newly created text, and from the Properties palette, change its text height to 3/8".

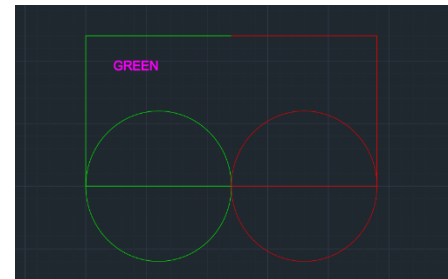


Figure 3. The drawing with MTEXT.

9. Your third task is to create single-line text. Expand the Multiline Text icon and select Single Line Text.
10. Specify the start point above the red circle, similar to where the GREEN text is. Set the text height to 3/8" and the rotation is zero.
11. Type in the word *RED*, and press Enter twice to exit the command.

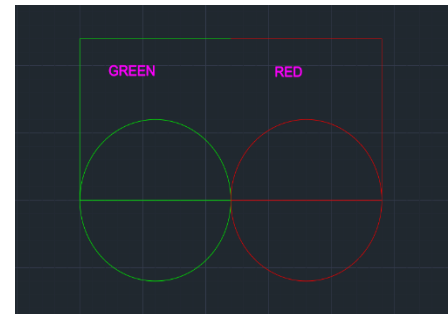


Figure 4. The drawing with Multiline and Single Line text.

12. Your next task is to add some dimensions.
13. Open the Dimension Styles Manager using the small icon in the corner of the Dimensions panel in the ribbon.
14. Click the New button. Name the new style *Practice*. Click OK, make sure Practice is highlighted in the list, and click on Modify.
15. From the Text tab, set the Text Height to 3/8". From the Primary Units tab, set the Precision to 0.0. Click on OK.

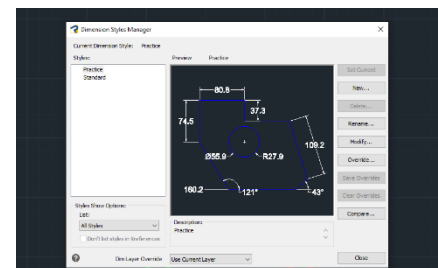


Figure 5. The Dimension Styles Manager dialog.

16. Highlight the new style Practice in the list and click on Set Current. Click on the Close button.
-

17. Click on the Linear Dimension icon in the palette. Using the endpoint Esnap, click on the upper left corner of the green side, pull over, and select the upper right corner of the red side. Place the dimension above the lines.
 18. Press the spacebar to restart the Linear Dimension command. Press the spacebar again and select the vertical green line. Place the dimension.
 19. Expand the Linear Dimension icon and select Radius.
 20. Select the red circle and place the dimension to the lower right.
 21. From the Application Menu, expand the Save As icon and select Save As. Navigate to the same folder as Exercise3.dwg, and save this file as **Exercise4**
 22. Close the file tab.
-

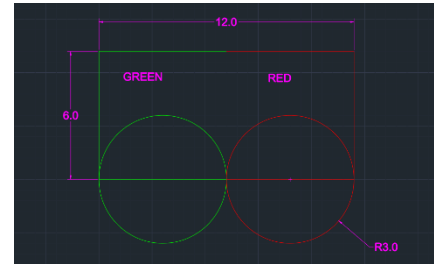


Figure 6. The drawing with text and dimensions.